



*“...it is a text with ever increasing complexities which seems to call into question the reader’s basic understanding of Jesus.”*

*-Paul Ricoeur*

Critical question of the text:

*Because of God's mercy, you have been given a little bit of TIME, and a little bit of MONEY. How will you use it to impact others for eternity?*

# Ripple Effect:

Living as agents of Kingdom Transformation

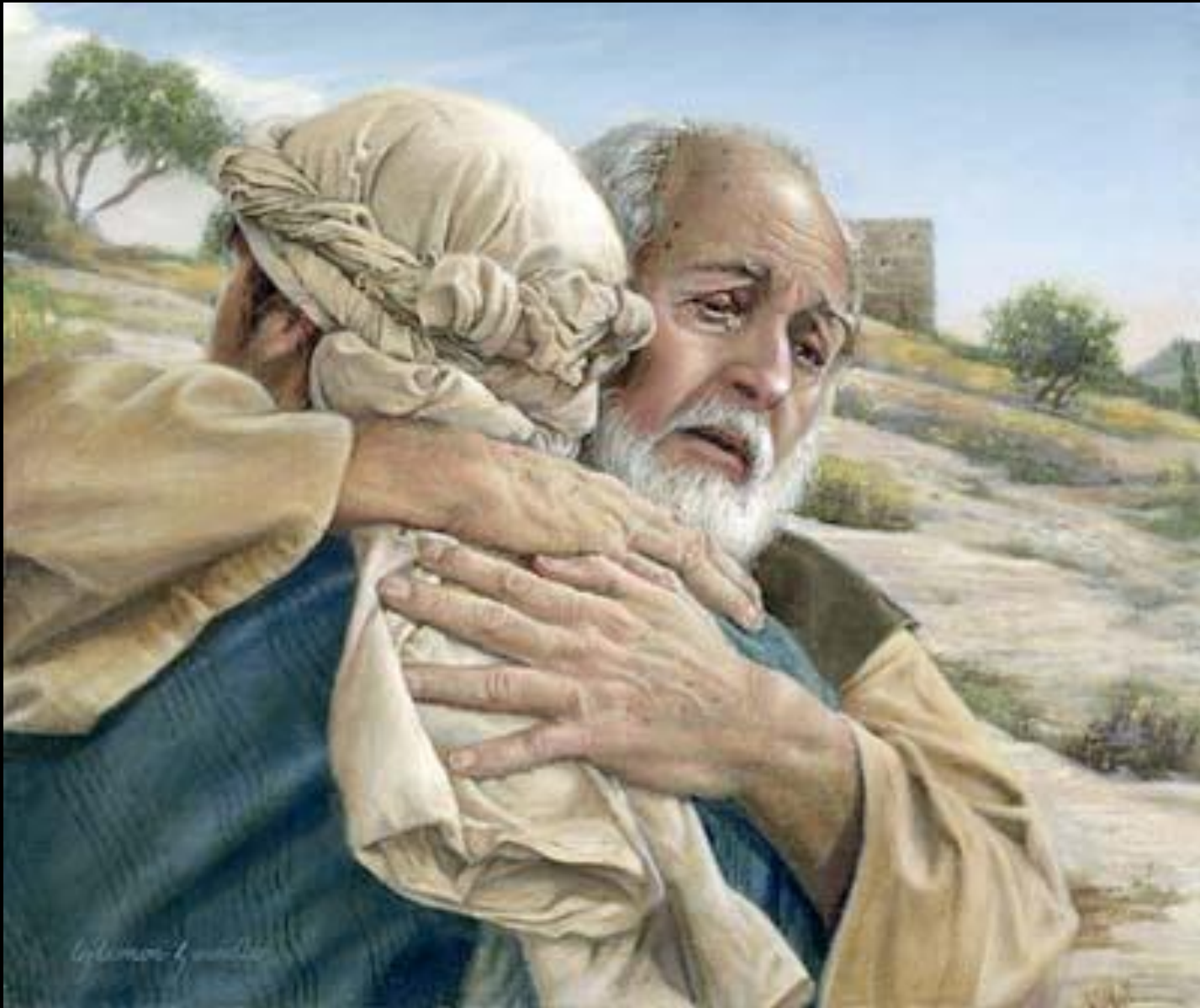


***You and I are always trusting  
someone or something with the  
leadership of our lives.***



*The major factor in the outcome of our lives is who or what we trust with the leadership of our lives.*





Luke 15

## How are Luke 15 and 16 connected?

Luke 15    The amazing love of God!

Luke 16    How you live in light of that love.

Luke 15    The undeserved love of God!

Luke 16    How you act when you experience  
the love of God.



“The steward is fired...but he was not thrown into jail and his family not sold into slavery for profit. This is what the first century listeners would have expected: The steward deserves justice – jail. He gets mercy.”

-Kenneth Bailey

“If Jesus is going to lead us into new life through his leadership, He has to speak about money. He has to teach us into a new relationship with money. He wouldn't be a Savior if He didn't. He knows to be human is to have a relationship with money and that requires Spiritual alertness.”

-Kenneth Bailey

Critical question of the text:

*Because of God's mercy, you have been given a little bit of TIME, and a little bit of MONEY. How will you use it to impact others for eternity?*

In view of God's mercies...

Every day of my life is a TEST

In view of God's mercies...

Every day of my life is a TRUST

“Faithfulness with spiritual ‘much’ precedes the faithfulness in the ‘little.’ Jesus is saying that in order to operate rightly in this world with the ‘little,’ we have to be operating rightly in the other world, in the kingdom under his leadership, with ‘the much.’ That is, we will not know how to relate to money correctly unless we have his Kingdom leadership perspective on it.”

-Darrell W. Johnson

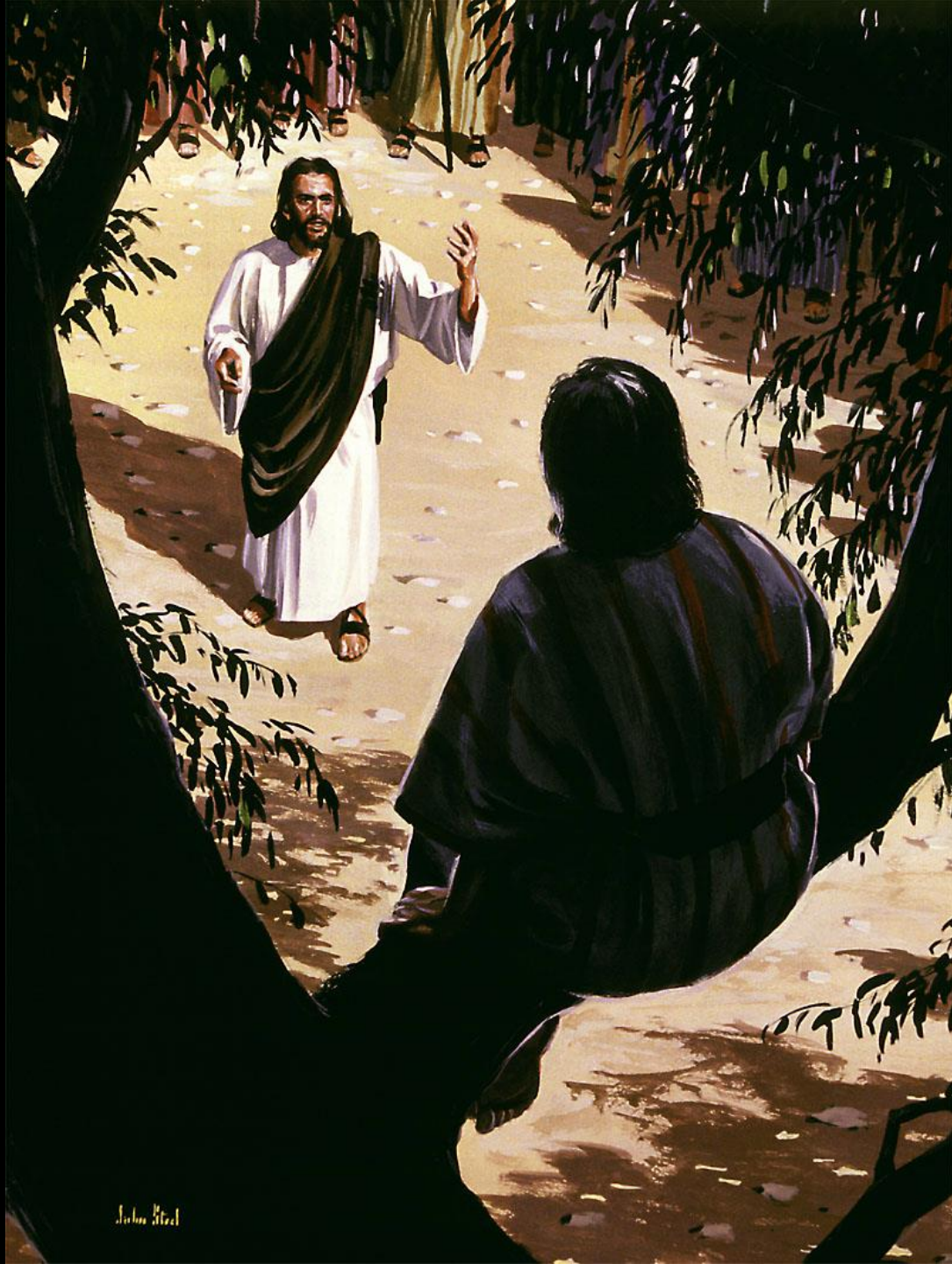
In view of God's mercies...

My life is a TEMPORARY assignment

Critical question of the text:

*Because of God's mercy, you have been given a little bit of TIME, and a little bit of MONEY. How will you use it to impact others for eternity?*





John Steel

*“Christianity is for the poor, and benefits the poor, but Christianity spread not because it made those who were poor rich, but the exact opposite. Christianity spread because Christians who lived in privilege and those who lived in poverty were so changed by the Gospel they became radically generous in meeting the needs of others.”*

*-Rodney Stark*

















Thank you Jesus  
FOR Blessing us with  
this new Church. Thank you  
FOR EVERYONE who participated  
in this process including  
the crew OF WORKERS.  
May we continue to be  
united as a Church Family.  
and remain humble as your  
servants in this  
community.

ALL Goodness LEADS to You  
CROSSPOINT → "T"



Critical question of the text:

*Because of God's mercy, you have been given a little bit of TIME, and a little bit of MONEY. How will you use it to impact others for eternity?*

