

An aerial photograph of a busy city street, showing a large number of pedestrians crossing a crosswalk. The scene is captured from a high angle, looking down on the people as they move across the road. The shadows of the people are cast long and dark on the pavement, indicating it is either early morning or late afternoon. The overall atmosphere is one of a bustling, active community.

Equipping Community

Ephesians 4:11-16



Church is...

Gospel

Equipping

Worshipping

Discipling

Missional

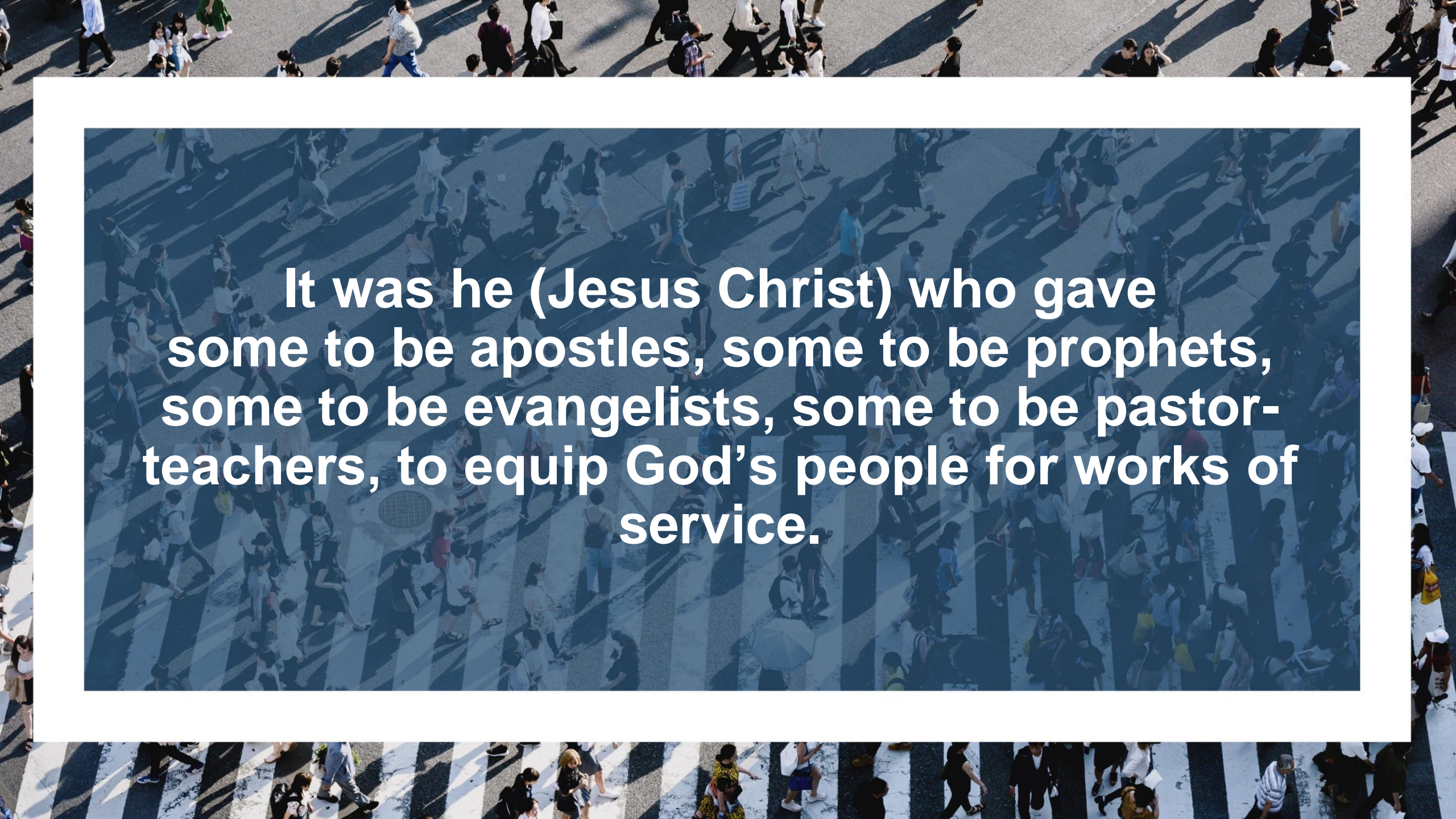
Sacramental

...Community

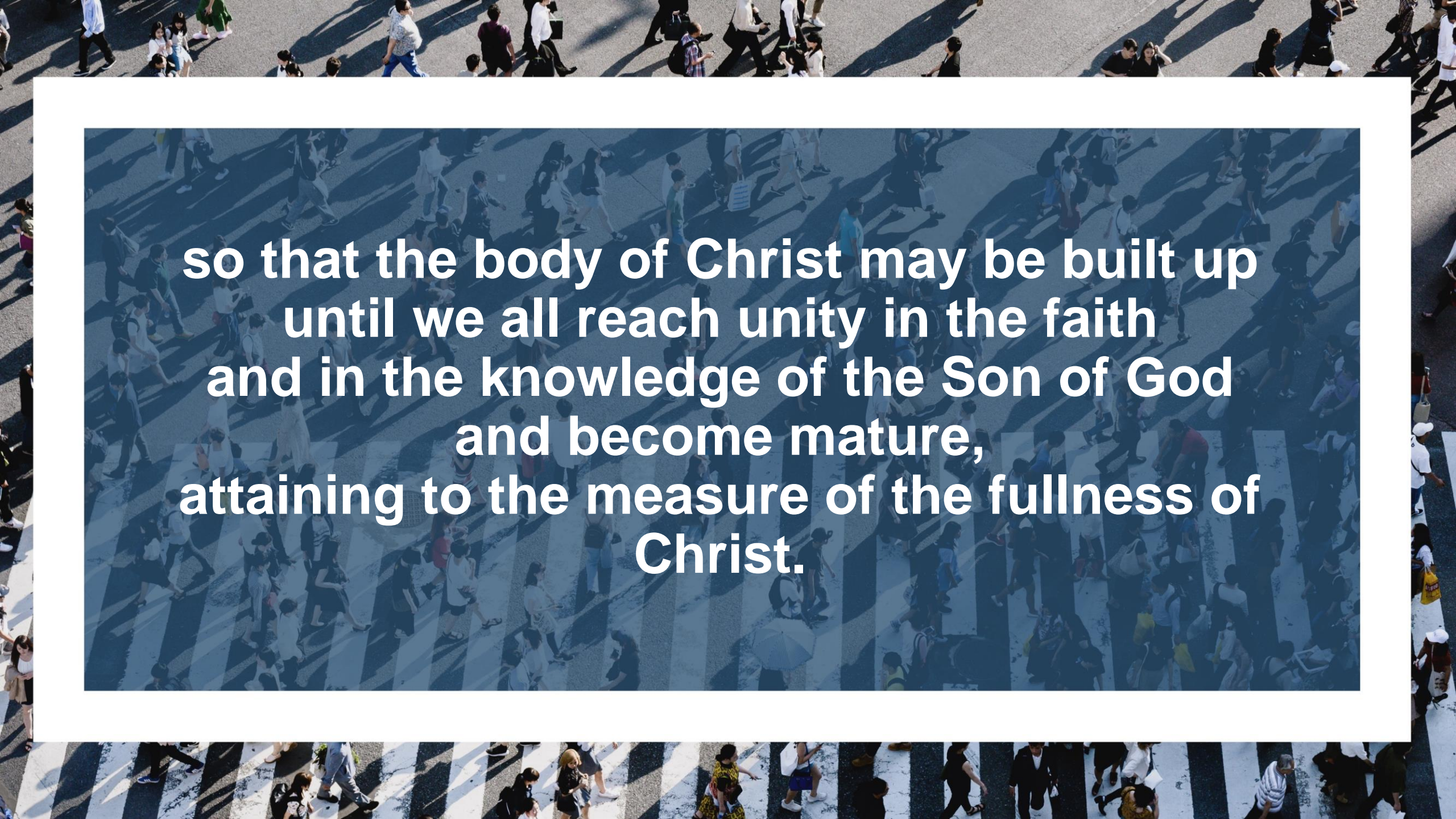
An aerial photograph of a busy pedestrian crossing, showing many people walking across the street. The image is overlaid with a semi-transparent blue filter. The text is centered in white, bold font.

**As a prisoner for the Lord, I urge you to
live a life worthy of the calling you have
received...**

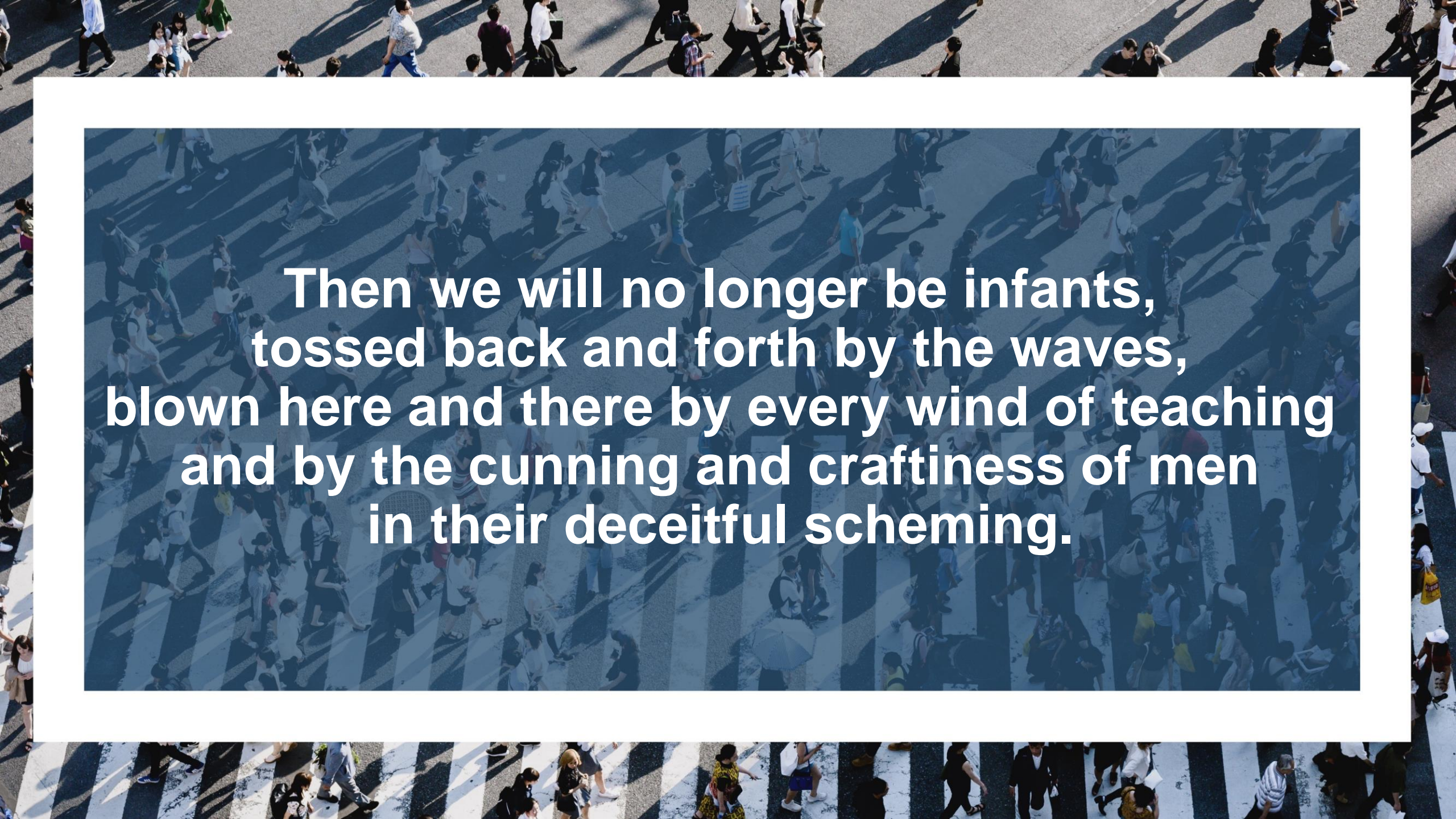
Eph 4:1

An aerial photograph of a busy city street with many pedestrians crossing a zebra crossing. The image is overlaid with a semi-transparent blue rectangle that contains white text. The text is centered and reads: "It was he (Jesus Christ) who gave some to be apostles, some to be prophets, some to be evangelists, some to be pastor-teachers, to equip God's people for works of service." The background image shows people walking in various directions, some carrying bags, and long shadows cast across the pavement.

It was he (Jesus Christ) who gave some to be apostles, some to be prophets, some to be evangelists, some to be pastor-teachers, to equip God's people for works of service.

An aerial photograph of a busy pedestrian crossing, showing many people walking across a zebra-striped crosswalk. The image is overlaid with a semi-transparent blue rectangle, and white text is centered within this rectangle. The text is in a bold, sans-serif font and reads: "so that the body of Christ may be built up until we all reach unity in the faith and in the knowledge of the Son of God and become mature, attaining to the measure of the fullness of Christ."

**so that the body of Christ may be built up
until we all reach unity in the faith
and in the knowledge of the Son of God
and become mature,
attaining to the measure of the fullness of
Christ.**

An aerial, high-angle photograph of a busy pedestrian crossing. The scene is filled with people walking in various directions. The ground is paved with white zebra stripes. A semi-transparent blue rectangular overlay covers the central portion of the image, containing white text. The overall atmosphere is one of a bustling, modern urban environment.

**Then we will no longer be infants,
tossed back and forth by the waves,
blown here and there by every wind of teaching
and by the cunning and craftiness of men
in their deceitful scheming.**



**Instead, speaking the truth in love,
we will in all things grow up into him
who is the Head, that is, Christ.**

**From him the whole body, joined and held
together by every supporting ligament, grows
and builds itself up in love, so each part does
its work.**

-Ephesians 4:11-16



1. What church is like when it's working right

A diverse community,
being built up into unity and maturity in Christ

An aerial, high-angle photograph of a busy city street. The scene is dominated by a large crosswalk with white stripes on a dark asphalt surface. Numerous people of various ages and ethnicities are walking across the street. Long, dark shadows are cast across the pavement, indicating it is either early morning or late afternoon. The overall atmosphere is one of a bustling, active urban environment.

2. What part God's people have

Engage in skilled servant ministry
using gifts God gave us



3. What part Pastor-teachers have

Equip God's people to do skilled servant ministry

An aerial photograph of a busy pedestrian crossing, showing many people walking across a zebra-striped crosswalk. The image is overlaid with a semi-transparent blue filter. The text is centered in the middle of the image.

Equip

To repair and prepare for intended use or purpose



Four equipping priorities:

1. discover identity, gifts, and calling in Christ
2. repair what hinders
3. prepare for intended use or purpose
4. release into servant ministry

An aerial photograph of a busy pedestrian crossing, showing many people walking across a zebra-striped crosswalk. The image is overlaid with a semi-transparent blue rectangle that contains text. The text is white and lists three equipping tools: God's Word, Prayer, and Suffering, each with a corresponding Bible verse reference.

Three equipping tools:

1. God's Word (II Timothy 3:16-17)

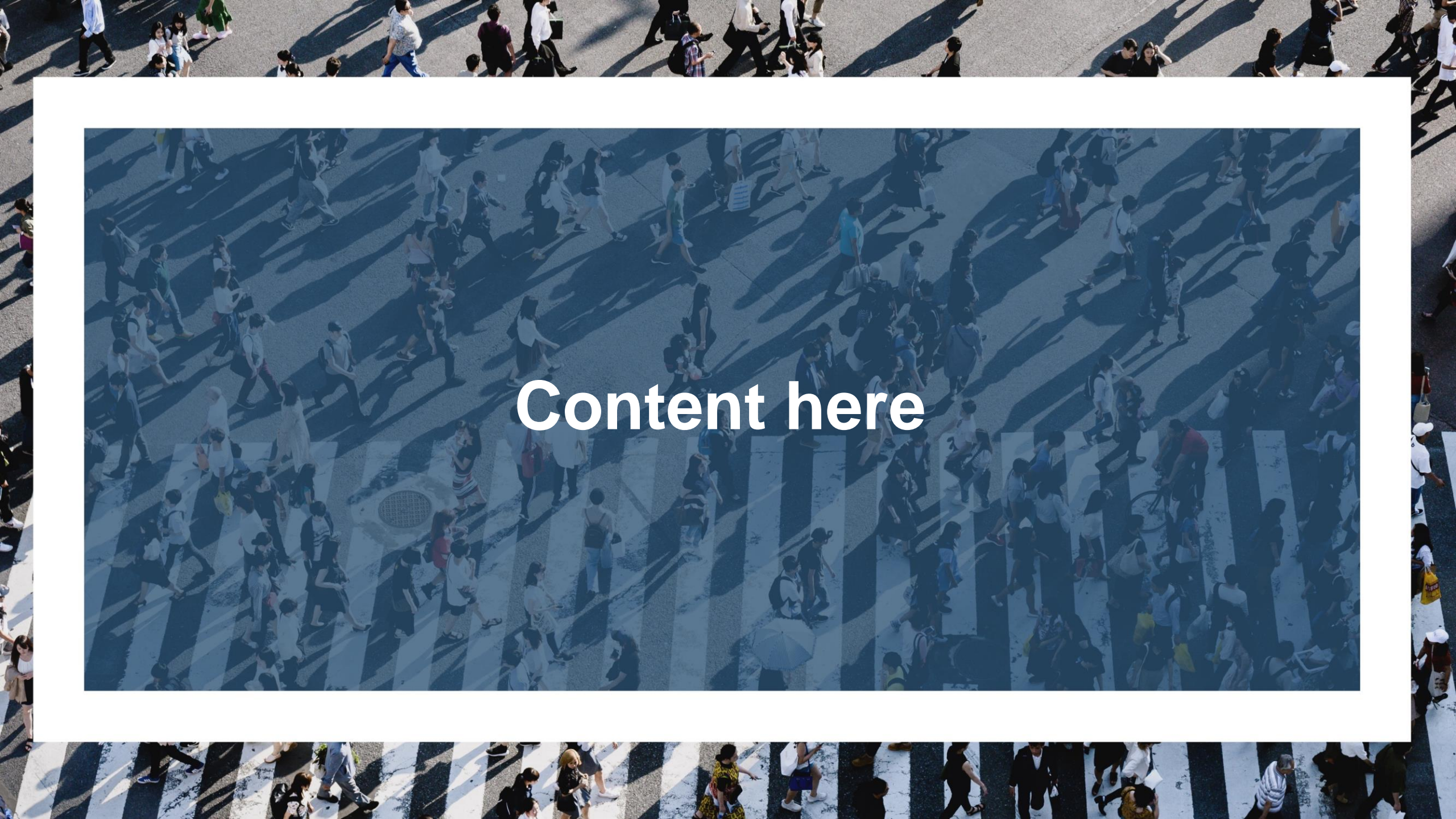
2. Prayer (Colossians 4:12-13)

3. Suffering (I Peter 5:10)

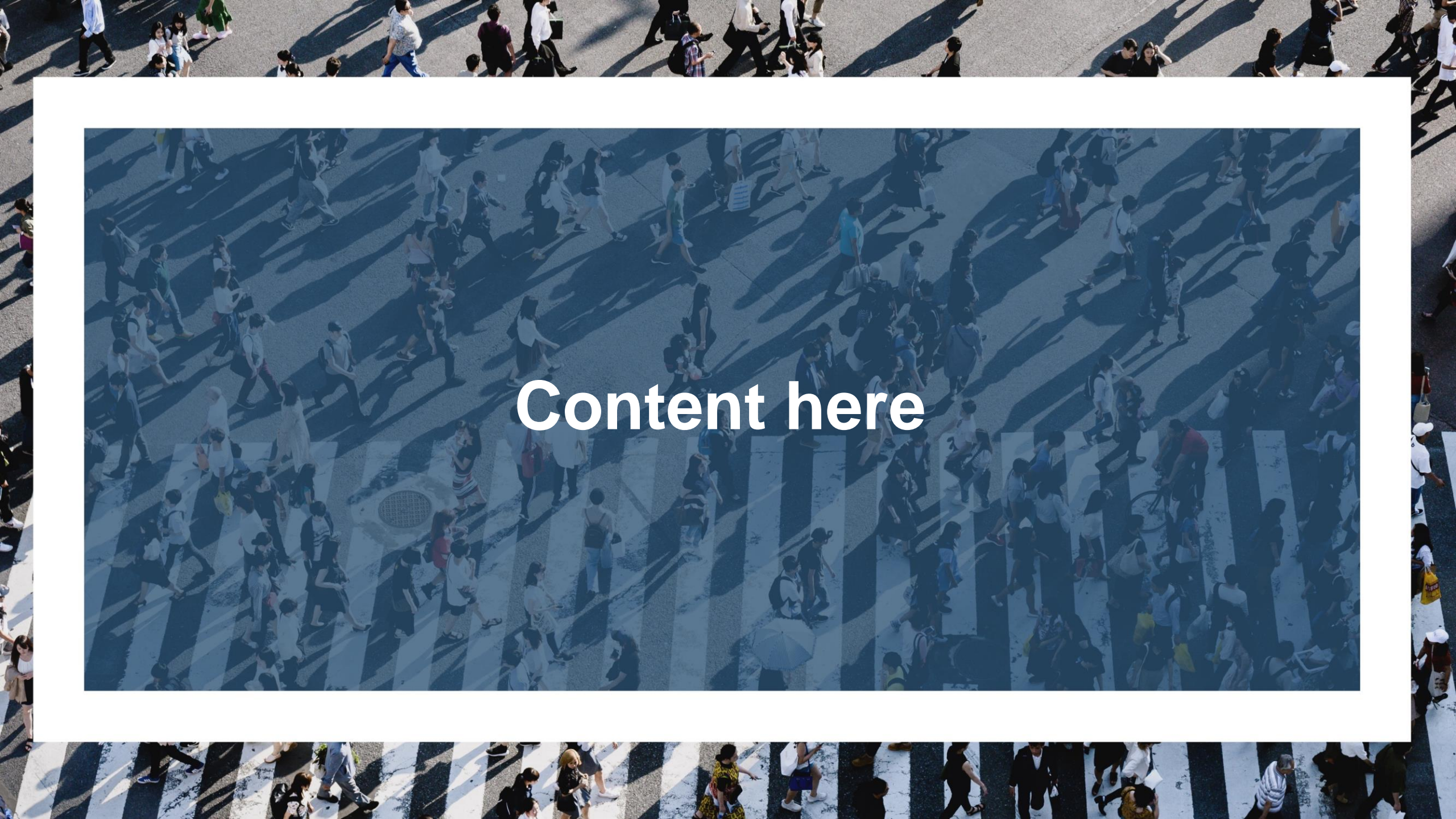


When the church works like it's supposed to:

The Head of the church is Christ
Servant ministry is in response to the gifts of
Christ God's people discover and use their gifts
to serve **Pastor-teachers equip**
God's people to serve **We are built up into**
unity and maturity in Christ



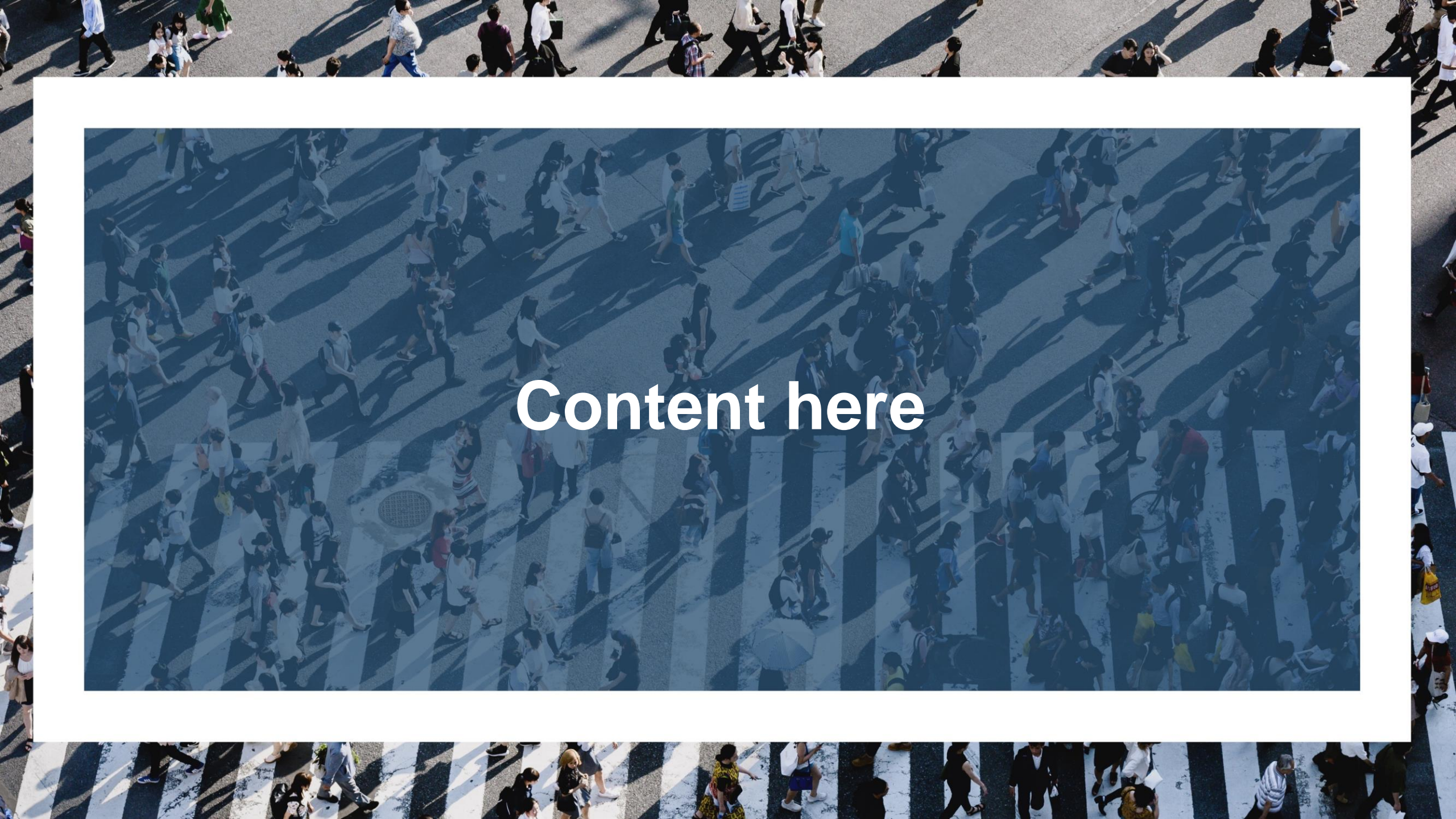
Content here



Content here

An aerial photograph of a busy pedestrian crossing, overlaid with a semi-transparent blue filter. The scene shows a large number of people walking across a zebra crossing. Long shadows are cast across the pavement, indicating it is either early morning or late afternoon. The text "Content here" is centered in the image in a white, sans-serif font.

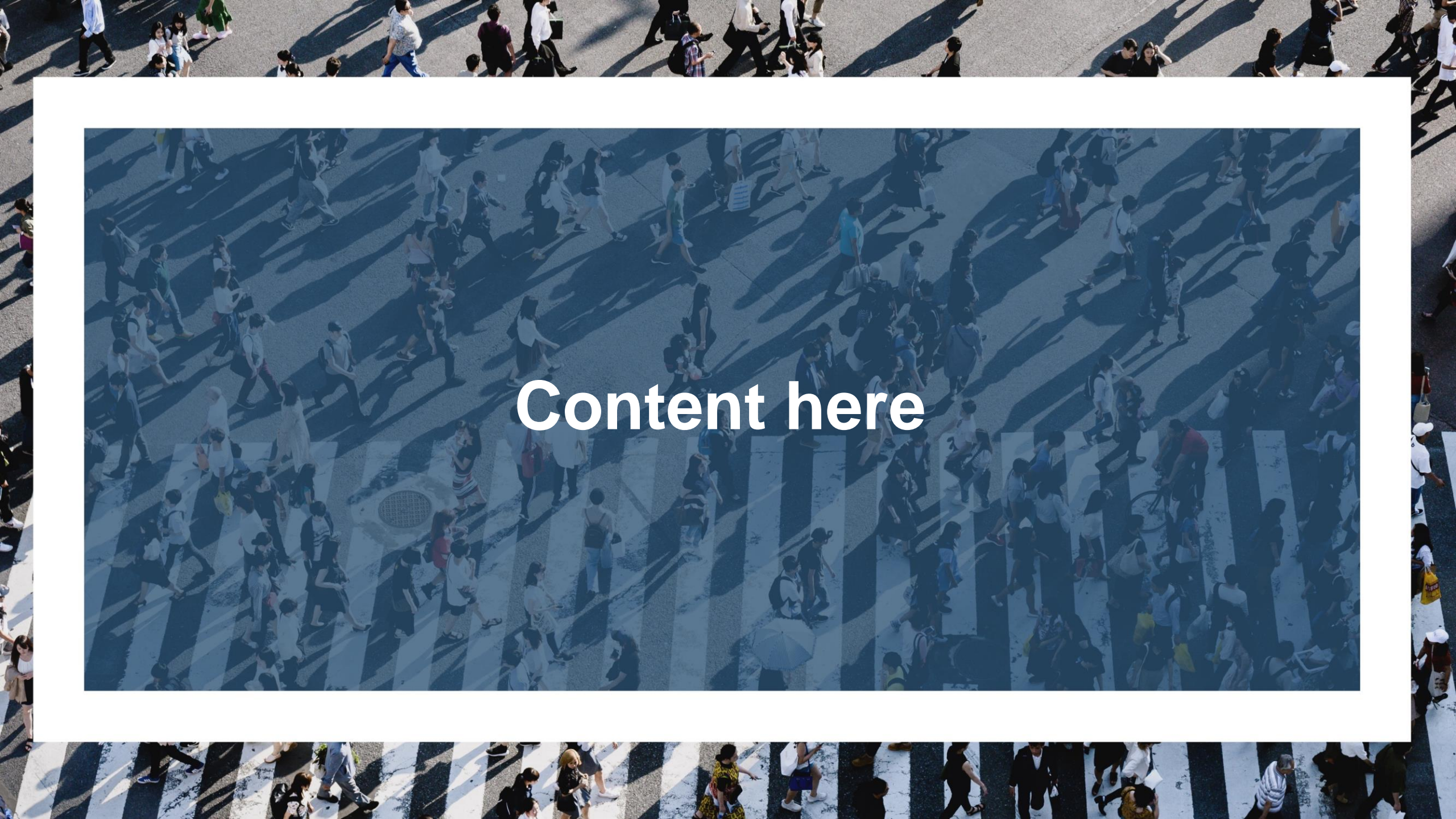
Content here



Content here

An aerial photograph of a busy pedestrian crossing, overlaid with a semi-transparent blue filter. The scene shows a large number of people walking across a zebra-striped crosswalk. Long shadows are cast across the pavement, indicating it is either early morning or late afternoon. The text "Content here" is centered in the image in a white, bold, sans-serif font.

Content here



Content here